

# 2017 Mordor Manual

Welcome to Shanghai!

Before you get off your plane, read this manual and ideally these essentials about logistics in and event & sightseeing information about Shanghai:

<http://www.mycountryandmypeople.org/00-essentials.html>



Our home is located about 50km West of Pudong International Airport, 6km from the Bund, 4 km from People's Square and 500m from Jingan Temple, Shanghai's spiritual heart. It can take up to 2 hours during rush hour to get to or from the airport by cab, so plan well ahead.



Subway lines 2 (green), 7 (orange) and 11 (brown) are all within walking distance. Bus line 71 which runs beneath Shanghai's West-East artery, the Yanan Elevated Highway, is though the most convenient means of transportation with a stop on the intersection of Yanan and Zhenning Rd, taking you all the way to the Bund and thus most major sights.



Our compound was constructed by a Hong Kong real estate developer in 1996 and was then sold for USD 2000 / SQM to foreigners only. Imagine that the building was then one of a few high rises surrounded by a ramshackle colonial neighborhood. All other “modern” buildings in our vicinity have been built several years later.

Over time many foreigners, many of them overseas Chinese and Taiwanese, have let their properties to businesses, turning the apartments into office space; a strictly speaking illegal but widely spread practice in convenient urban locations. Maintenance is a serious issue in China in general and in office buildings in particular, therefore you will notice that the compound is already quite run down; you nevertheless wouldn't believe what a SQM is currently sold for.

Since a few years residents are claiming back their turf, creating in both Xinan buildings a blend of commerce, sports, education, and private activities. We even have a Buddhist nunnery in the West building. Cars must enter from Zhenning Rd and must leave from the Yongyuan Rd exit. Our apartment is located in the West building on the 7<sup>th</sup> floor.





Upon getting off the elevator turn left to reach apartment 7E. On your right hand side you will see a small locked storage. Open the lock by turning the dial to 525. Open the door and you will see in eye height on the third right shelf level a small black plastic suitcase containing a camping stove. Take it out and get your key, which is tied to a blue Bosch key leash.

**Please do always lock the door when you leave the house and turn off all appliances and lights.** There is a central light switch in the dining room located next to the Shanghai wall map on top of the heating control of this room and next to the AC control.



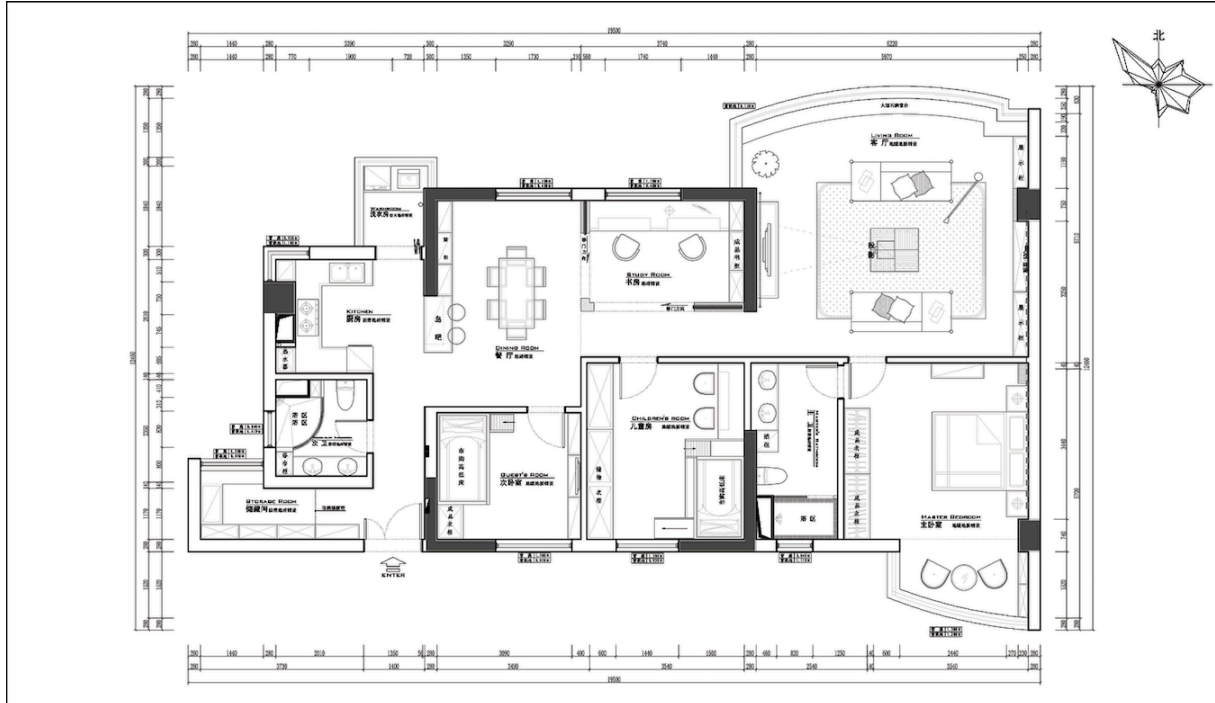
**Floor heating and AC need to be switched off in all rooms separately.** You will find AC remote controls usually on the windowsill or on the bedside table in study, guest, children's, and master bedroom.

In case we have turned off gas and water boiler, you can easily turn them off by opening in the kitchen the lower right cupboard and pushing the small yellow handle back. Open the middle left cupboard and press the left button below the display to turn on/off the heating; press the right button below the display to turn on / off the water boiler. **Turn the gas off - if we tell you to do so - before your departure by pulling the small yellow handle to you.**



Shanghai experiences occasional strong winds and torrential rain as a result of typhoons, which usually loose strength on their way North along the Chinese and Taiwanese coastline. **So, please make sure that you have closed all windows before**

**leaving the house for good.** If you leave for day trips it is recommended that you tilt the bedroom windows on both north and south side to get some fresh air into the apartment. If PM 2.5 levels exceed 150, then leave the windows closed and turn on the air purifier canon which is located in the living room under the work desk. There are two small air purifiers in the children's and the master bedroom.



We share our home with Fuso, an extremely social and lovely cat, which was bestowed upon us after our daughter's best friend left the country in 2014. She is not shy and will probably come to nap on your lap when you make yourself comfortable on the couch, or will try to share the bed with you, if you let her.

**Please check if our domesticated tiger has sufficient water and dry food left in his containers, in particular before your departure, and clean the litter box at least once a week.** Grab a plastic bag from the drawer in the green side table in the living room and take one of the small shovels available. Dispose of the cat litter directly in the main waste bin in the staircase outside of our apartment. You will find dry food and litter supply behind the shoe shelves.





We also ask you to **check our plants before your departure and water them if required.** You will find the watering can on the small balcony, where the washing machine is located.

In case you have to do laundry, we recommend to use the dry cleaner on Zhenning Rd. as indicated in the [Grounding Neighborhood](#) document. Its both cheap and reliable and saves us troubles with explaining how the wasching machine works and you trying to get your laundry from the third floor rooftop.

Generally speaking, our apartment is located in a very convenient neighborhood with a rich local charme. You can find pretty everything you need for daily life and beyond on Zhenning Rd walking North until Changshou Rd.

Well, having said this, enjoy your time and *carpe diem!*

Your hosts: Isak, Zoe, Xueying, Knut

Emergency mobile numbers: +86 18516268069 and +86 186 1665 1191

